

maneuver

FINISHED SIZE | 70" x 77"

FABRIC REQUIREMENTS

| | | |
|-----------------|---------------|--------------------|
| Fabric A | DUV60301 | $\frac{7}{8}$ yd. |
| Fabric B | DUV60202 | $\frac{7}{8}$ yd. |
| Fabric C | PES917 | $1\frac{1}{8}$ yd. |
| Fabric D | DUV60201 | $\frac{5}{8}$ yd. |
| Fabric E | DUV60105 | $\frac{1}{2}$ yd. |
| Fabric F | DUV60302 | $\frac{1}{2}$ yd. |
| Fabric G | PES905 | $\frac{5}{8}$ yd. |
| Fabric H | PES901 | $\frac{1}{2}$ yd. |
| Fabric I | PES911 | $\frac{1}{2}$ yd. |
| Fabric J | PES908 | $\frac{1}{4}$ yd. |
| Fabric K | DUV60205 | $1\frac{1}{2}$ yd. |
| Fabric L | DUV60306 | $\frac{3}{4}$ yd. |
| Backing | WIDEDUV60205a | $2\frac{1}{2}$ yd. |

BACKING FABRIC

WIDEDUV60205a $2\frac{1}{2}$ yds (Wideback Included)

BINDING FABRIC

Fabric **L** DUV60306 (Included)

CUTTING DIRECTIONS

$\frac{1}{4}$ " seam allowances are included.
WOF means width of the fabric.

- One (1) template 1a from fabric **A** (follow diagram 1 for **directional fabric**).
- One (1) template 1b from fabric **A** (follow diagram 1 for **directional fabric**).
- Seven (7) template 2a from fabric **A** (follow diagram 1 for **directional fabric**).
- Eight (8) template 2b from fabric **A** (follow diagram 1 for **directional fabric**).
- Two (2) template 1a from fabric **B**.
- Two (2) template 1b from fabric **B**.
- Seven (7) template 2a from fabric **B**.
- Six (6) template 2b from fabric **B**.
- Seventeen (17) template 1a from fabric **C**.
- Eighteen (18) template 1b from fabric **C**.
- Three (3) template 2a from fabric **C**.
- One (1) template 2b from fabric **C**.
- Two (2) $7\frac{1}{2}$ " squares from fabric **C**.
- Six (6) $14\frac{1}{2}$ " x $7\frac{1}{2}$ " rectangles from fabric **C**.
- One (1) template 1a from fabric **D** (follow diagram 2 for **directional fabric**).
- One (1) template 1b from fabric **D** (follow diagram 2 for **directional fabric**).
- Five (5) template 2a from fabric **D** (follow diagram 2 for **directional fabric**).
- Four (4) template 2b from fabric **D** (follow diagram 2 for **directional fabric**).
- Three (3) template 2a from fabric **E**.
- Three (3) template 2b from fabric **E**.
- One (1) template 1a from fabric **F** (follow diagram 3 for **directional fabric**).
- One (1) template 1b from fabric **F** (follow diagram 3 for **directional fabric**).
- Four (4) template 2a from fabric **F** (follow diagram 3 for **directional fabric**).
- Four (4) template 2b from fabric **F** (follow diagram 3 for **directional fabric**).

- One (1) template 1a from fabric **G**.
- Two (2) template 1b from fabric **G**.
- Four (4) template 2a from fabric **G**.
- Four (4) template 2b from fabric **G**.
- Three (3) template 2a from fabric **H**.
- Six (6) template 2b from fabric **H**.
- One (1) template 1a from fabric **I**.
- One (1) template 1b from fabric **I**.
- Four (4) template 2a from fabric **I**.
- Three (3) template 2b from fabric **I**.
- Two (2) template 2a from fabric **J**.
- One (1) template 2b from fabric **J**.
- Nineteen (19) template 1a from fabric **K**.
- Fifteen (15) template 1b from fabric **K**.
- One (1) template 2a from fabric **K**.
- One (1) Template 2b from fabric **K**.
- Six (6) 14½" x 7½" rectangles from fabric **K**.
- Eight (8) 2½" x WOF strips from fabric **L** (binding).

Fabric A Cutting Diagram.

- Rotate your templates to cut your pieces according to diagram 1.

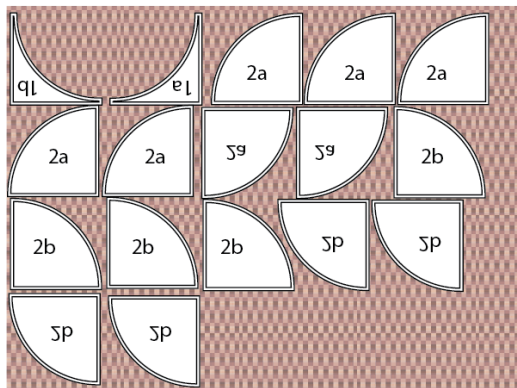


DIAGRAM 1

Fabric D Cutting Diagram.

- Rotate your templates to cut your pieces according to diagram 2.

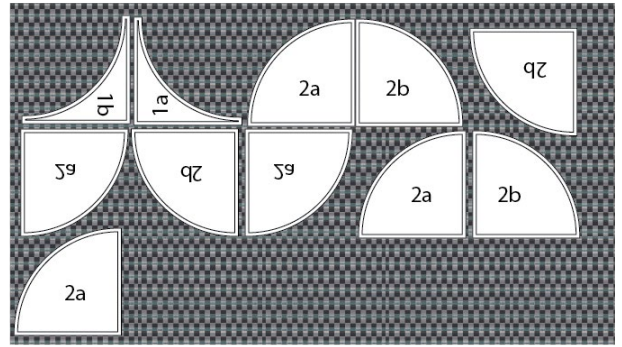


DIAGRAM 2

Fabric F Cutting Diagram.

- Rotate your templates to cut your pieces according to diagram 3.

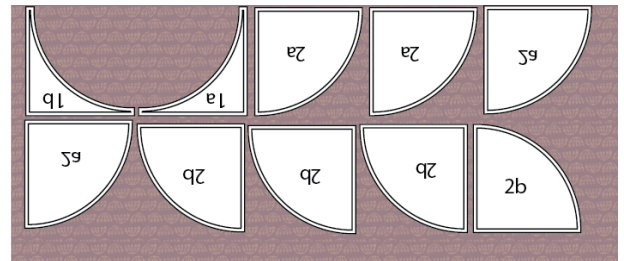


DIAGRAM 3

Non Directional Fabrics.

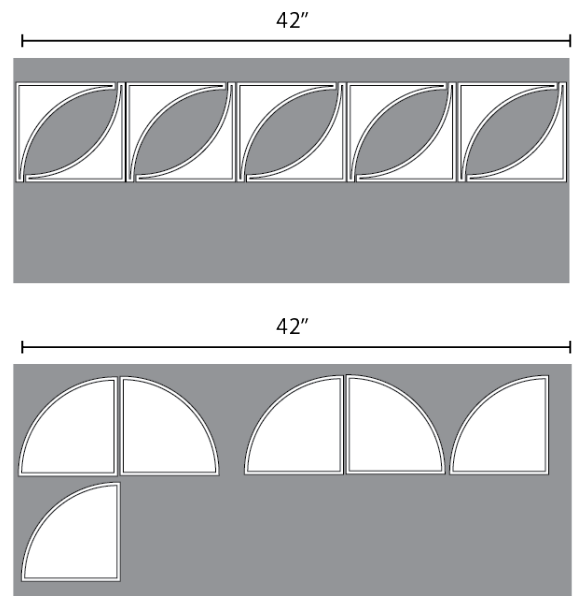
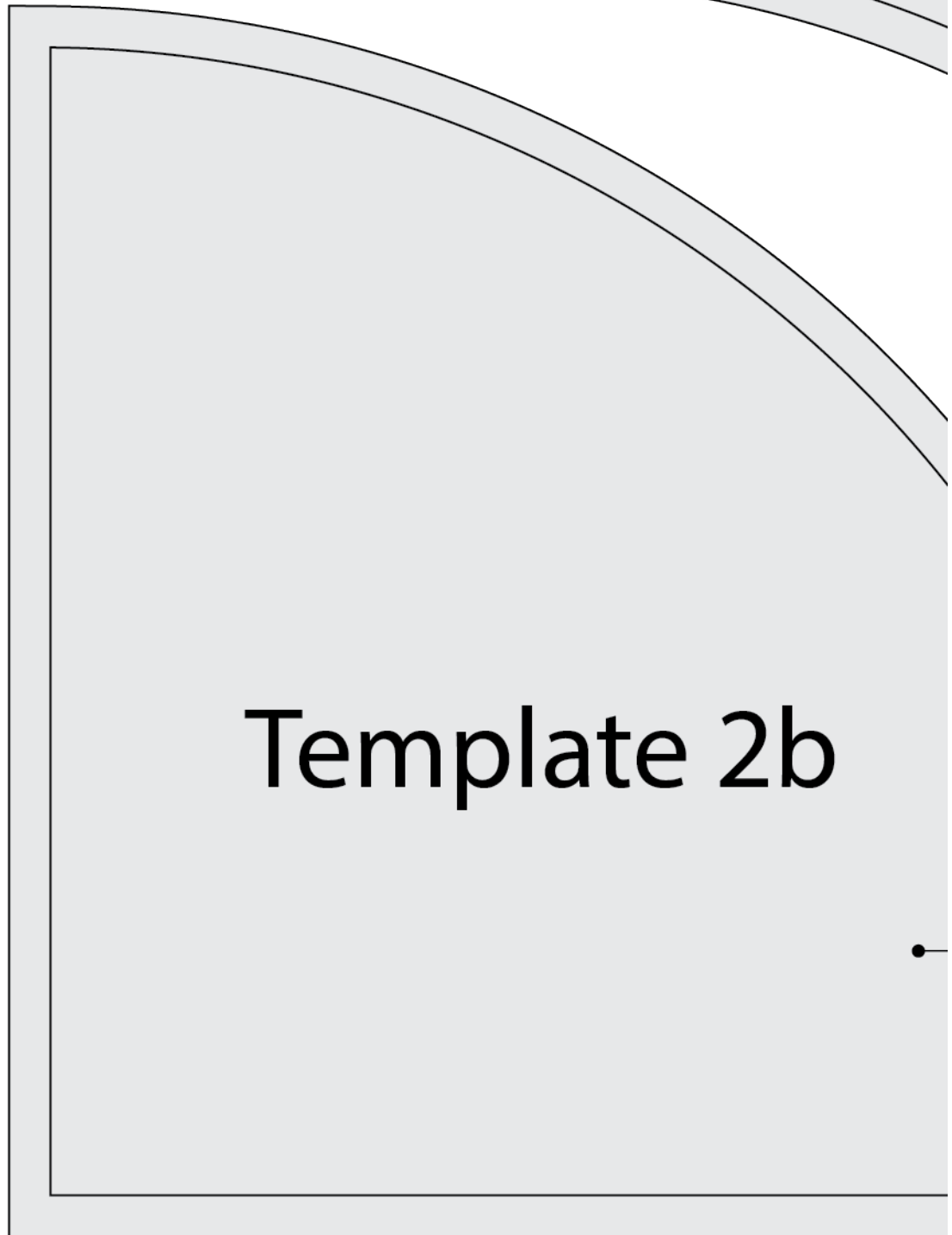
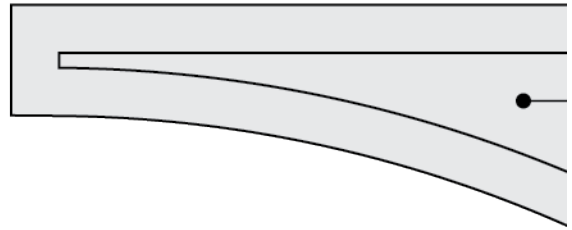


DIAGRAM 4



Template 2b

• Template 1b

