

I Still Love Snow

Simply Shelly
design and illustration

A Free Project Sheet
NOT FOR RESALE

By Shelly Comiskey



Quilt Design by Heidi Pridemore

2 ply
flannel

Quilt 2

Skill Level: Beginner

 Henry Glass & Co., Inc.



facebook

Finished Quilt Size: 67" x 77"
49 West 37th Street, New York, NY 10018
tel: 212-686-5194 fax: 212-532-3525
Toll Free: 800-294-9495
www.henryglassfabrics.com

I STILL LOVE SNOW Quilt 2

Finished Quilt Size: 67" x 77"

Fabrics in the Collection



Snowman Panel - Blue
F6792P-11



Tossed Snowmen - Blue
F6793-11



Tossed Snowmen - Gray
F6793-90



Plaid - Cream
F6794-13



Small Blocks Snowmen - Multi
F6795-11



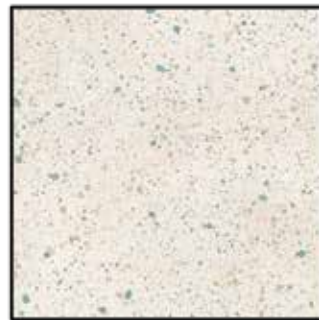
Tossed Ice Skates/Hats - Cream
F6796-40



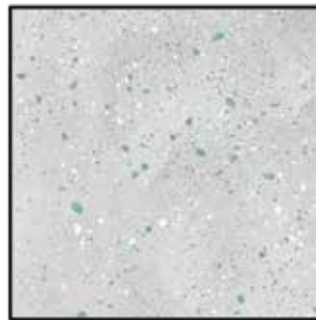
Tossed Ice Skates/Hats - Gray
F6796-90



Snow Texture - Blue
F6797-11



Snow Texture - Cream
F6797-40



Snow Texture - Gray
F6797-90



Snowmen on Stripe - Cream
F6798-40



Snowflakes - Blue
F6799-11



Snowflakes - Cream
F6799-40



Snowflakes - Gray
F6799-90



Novelty Stripe - Multi
F6800-11

I STILL LOVE SNOW

Quilt 2

Materials

1 ½ yards	Small Blocks Snowmen - Multi (A)	F6795-11
1 ⅛ yards	Snow Texture - Gray (B)	F6797-90
⅞ yard	Tossed Ice Skates/Hats - Cream (C)	F6796-40
⅞ yard	Tossed Snowmen - Blue (D)	F6793-11
½ yard	Snow Texture - Blue (E)	F6797-11
2 ⅓ yards	Novelty Stripe - Multi (F)	F6800-11
⅔ yard	Snowflakes - Blue (G)	F6799-11*
5 yards	Snowflakes - Cream (Backing)	F6799-40

*Includes binding

Cutting Instructions

Please note: all strips are cut across the width of fabric (WOF) from selvage to selvage edge unless otherwise noted.

From the Small Blocks Snowmen - Multi (A), fussy cut:

- (15) 8 ½” squares, each centered on a 3 block by 3 block segment.

From the Snow Texture - Gray (B), cut:

- (8) 2” x WOF strips. Sub-cut strips into (30) 2” x 8 ½” strips.
- (10) 2” x WOF strips. Sub-cut strips into (30) 2” x 11 ½” strips.

From the Tossed Ice Skates/Hats - Cream (C), cut:

- (5) 5 ½” x WOF strips. Sub-cut strips into (30) 5 ½” squares.

From the Tossed Snowmen - Blue (D), cut:

- (5) 5 ½” x WOF strips. Sub-cut strips into (30) 5 ½” squares.

From the Snow Texture - Blue (E), cut:

- (4) 2” x WOF strips. Sew the strips together end to end with diagonal seams and cut (2) 2” x 60 ½” strips.
- (3) 2” x WOF strips. Sew the strips together end to end with diagonal seams and cut (2) 2” x 53 ½” strips.

From the Novelty Stripe - Multi (F), cut:

- (2) 7 ½” x 81” LOF strips.
- (2) 7 ½” x 71” LOF strips.

From the Snowflakes - Blue (G), cut:

- (8) 2 ½” x WOF strips for the binding.

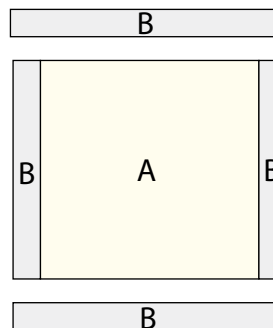
From the Snowflakes - Cream (Backing), cut:

- (2) 85” x WOF strips for the backing. Sew the strips together and trim to make the 75” x 85” back.

Sewing Instructions

1. Sew (1) 2” x 8 ½” Fabric B strip to each side of one 8 ½” Fabric A square. Sew (1) 2” x 11 ½” Fabric B strip to the top and to the bottom of the Fabric A square. Trim the block to measure 10 ½” square to make (1) Block One (Fig. 1). Repeat to make (15) Block Ones total.

Block One
make 15



Trim to measure
10 ½” x 10 ½”
after the borders
are added

Fig. 1

2. Sew (2) 5 ½” Fabric C squares and (2) 5 ½” Fabric D squares together into (1) 4-patch block to make (1) Block Two (Fig. 2). Repeat to make (15) Block Twos total.

Block Two
make 15

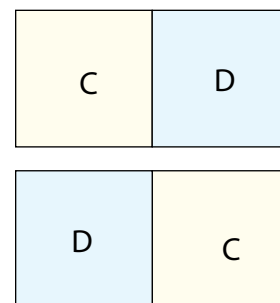


Fig. 2

Quilt Top Assembly

(Refer to the Quilt Layout while assembling.)

3. Sew (3) Block Ones and (2) Block Twos together, alternating them, to make Row One. Repeat to make Rows Three and Five.
4. Sew (3) Block Twos and (2) Block Ones together, alternating them, to make Row Two. Repeat to make Rows Four and Six.
5. Sew the (6) rows together, in numerical order, to make the Center Block.
6. Sew (1) 2” x 60 ½” Fabric E strip to each side of the Center Block. Sew (1) 2” x 53 ½” Fabric E strip to the top and to the bottom of the Center Block.

I STILL LOVE SNOW

Quilt 2

7. Center (1) 7 1/2" x 81" Fabric F strip on (1) side of the Center Block and pin in place. Start sewing the strip a 1/4" from the top edge of the block and stop a 1/4" from the bottom edge. **DO NOT TRIM THE EXCESS.** Repeat with the opposite side.

8. Repeat Step 7 to sew (1) 7 1/2" x 71" Fabric F strip to the top and to the bottom of the Center Block, making sure to stop and start 1/4" away from each end of the block. To miter each corner, fold the Center Block on a diagonal, wrong side together. This should line up the strips from adjacent sides (Fig. 3).

9. Starting at the sewn seam (represented by the arrow in Figure 3), draw a 45-degree line to the edge of the fabric. Sew on the drawn line. Trim the excess fabric leaving a 1/4" seam. Repeat this step with the remaining corners to make the quilt top.

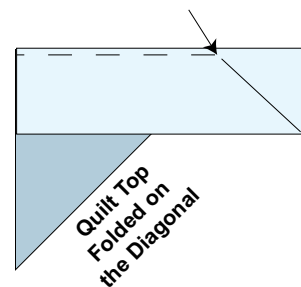
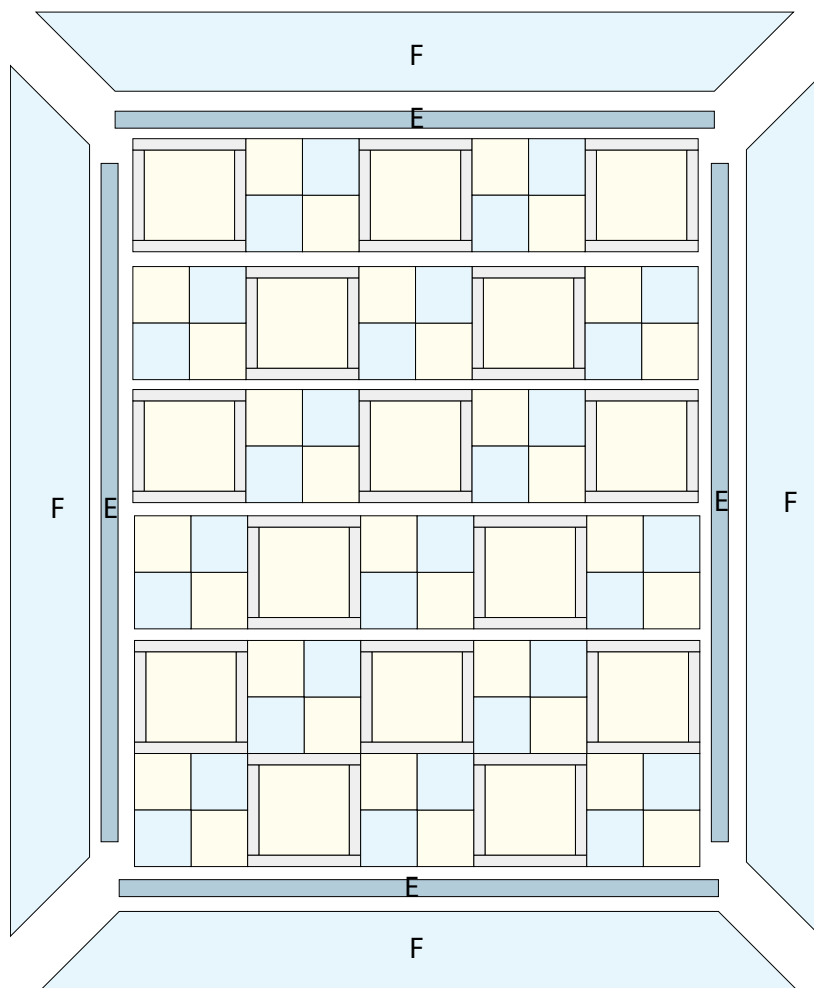


Fig. 3

10. Layer and quilt as desired.

11. Sew the (8) 2 1/2" x WOF Fabric G strips together, end to end with 45-degree seams, to make the binding. Fold this long strip in half lengthwise with wrong sides together and press.

12. Bind as desired.



Quilt Layout

Every effort has been made to ensure that all projects are error free. All the information is presented in good faith, however no warranty can be given nor results guaranteed as we have no control over the execution of instructions. Therefore, we assume no responsibility for the use of this information or damages that may occur as a result. When errors are brought to our attention, we make every effort to correct and post a revision as soon as possible. Please make sure to check www.henryglassfabrics.com for pattern updates prior to starting the project. We also recommend that you test the project prior to cutting for kits. Finally, all free projects are intended to remain free to you and are not for resale.