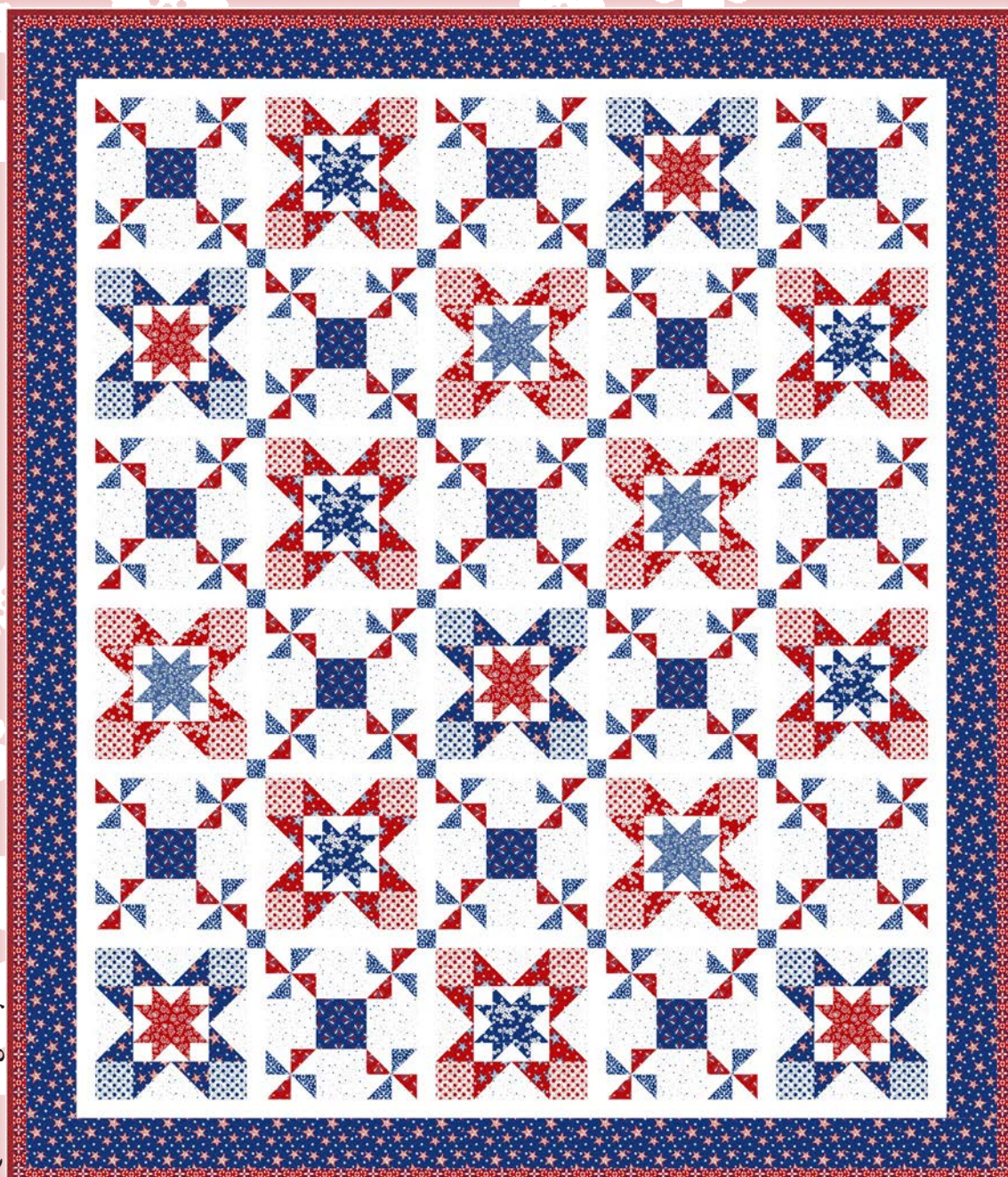




Quilt 1

ANTHEM

by Satin Moon Designs



Quilt design by Denise Russell.

Quilt size: 80" x 93"

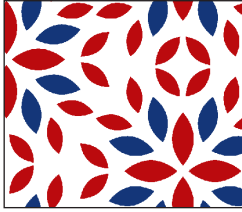
Skill Level: Advanced Beginner

Blank Quilting Corporation
49 West 37th Street ♦ New York, NY 10018
Tel: 800-294-9495 ♦ Fax: 212-679-4578
www.blankquilting.net

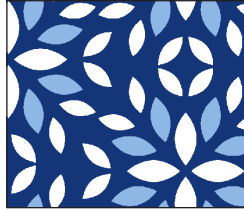
facebook

Free Project
NOT FOR RESALE

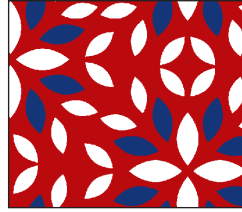
ANTHEM - Fabrics in the Collection



2480-01 Tiles
White



2480-77 Tiles
Dk. Blue



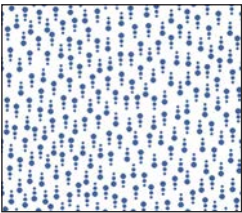
2480-88 Tiles
Red



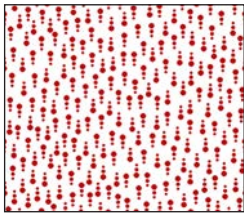
2481-76 Mini Floral
Med. Blue



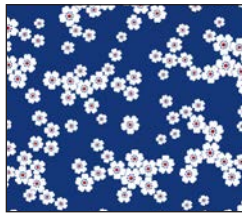
2481-88 Mini Floral
Red



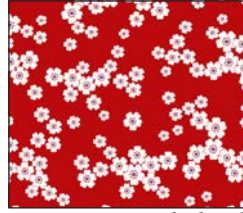
2482-07 Line Dots
White/Blue



2482-08 Line Dots
White/Red



2483-77 Spaced Floral
Dk. Blue



2483-88 Spaced Floral
Red



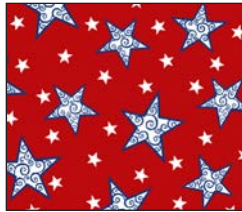
2484-07 Floral Petals
White/Blue



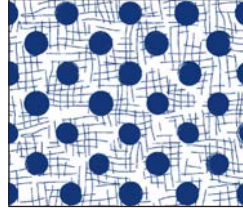
2484-88 Floral Petals
Red



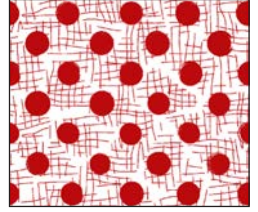
2485-77 Stars
Dk. Blue



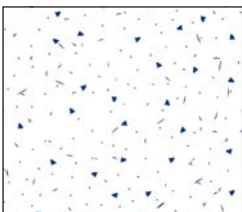
2485-88 Stars
Red



2486-07 Dots
White/Blue



2486-08 Dots
White/Red



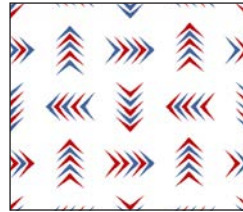
2487-07 Specks
White/Blue



2488-77 Fans
Dk. Blue



2488-88 Fans
Red



2489-01 Arrows
White

Selected fabrics from the
Eclipse Collection



3955
White



3955
Red

Materials

Yardages and cutting instructions are based on 42" of usable fabric width.

1/4 yard 2481-76 Mini Floral - Med. Blue
1/3 yard 2483-77 Spaced Floral - Dk. Blue
1/3 yard 2484-88 Floral Petals - Red
1/3 yard 2486-07 Dots - White/Blue
1/3 yard 2488-77 Fans - Dk. Blue
3/8 yard 2483-88 Spaced Floral - Red
1/2 yard 2480-88 Tiles - Red
1/2 yard 2485-88 Stars - Red
1/2 yard 2486-08 Dots - White/Red
5/8 yard 2480-77 Tiles - Dk. Blue
5/8 yard 2488-88 Fans - Red
3/4 yard 3955 Eclipse - Red
1-5/8 yards 2485-77 Stars - Dk. Blue
1-7/8 yards 2487-07 Specks - White/Blue
2-2/3 yards 3955 Eclipse - White
5-3/4 yards 2480-01 Tiles - White for backing
88" x 102" piece of Air Lite® Colour Me 100% Cotton batting

Cut Fabrics

Note: All strips are cut across the width of the fabric (WOF) from selvage to selvage unless otherwise indicated.

From 2481-76 Mini Floral - Med. Blue:

*Cut one 2" x WOF strip. Sub-cut twenty-one 2" I squares.
*Cut one 3-1/2" x WOF strip. Sub-cut four 3-1/2" J squares and eleven 2" I squares (for a total of 32).

From 2483-77 Spaced Floral - Dk. Blue:

*Cut two 2" x WOF strips. Sub-cut forty-two 2" I squares.
*Cut one 3-1/2" x WOF strip. Sub-cut six 3-1/2" J squares and six 2" I squares (for a total of 48).

From 2484-88 Floral Petals - Red:

*Cut two 2" x WOF strips. Sub-cut forty 2" I squares.
*Cut one 3-1/2" x WOF strip. Sub-cut five 3-1/2" J squares.

From 2486-07 Dots - White/Blue:

*Cut two 3-1/2" x WOF strips. Sub-cut twenty 3-1/2" D squares.

From 2488-77 Fans - Dk. Blue:

*Cut two 4-1/2" x WOF strips. Sub-cut fifteen 4-1/2" C squares.

From 2483-88 Spaced Floral - Red:

*Cut three 3-1/2" x WOF strips. Sub-cut thirty-two 3-1/2" F squares.

From 2480-88 Tiles - Red:

*Cut nine 1-1/2" x WOF strips for border 3.

From 2485-88 Stars - Red:

*Cut four 3-1/2" x WOF strips. Sub-cut forty-eight 3-1/2" F squares.

From 2486-08 Dots - White/Red:

*Cut four 3-1/2" x WOF strips. Sub-cut forty 3-1/2" D squares.

From 2480-77 Tiles - Dk. Blue:

*Cut three 5-3/4" x WOF strips. Sub-cut fifteen 5-3/4" A squares and twenty 2" cornerstone squares.

From 2488-88 Fans - Red:

*Cut three 5-3/4" x WOF strips. Sub-cut fifteen 5-3/4" A squares.

From 3955 Eclipse - Red:

*Cut nine 2-1/2" x WOF strips for binding.

From 2485-77 Stars - Dk. Blue:

*Cut four 3-1/2" x WOF strips. Sub-cut forty 3-1/2" F squares.
*Cut nine 4-1/2" x WOF strips for border 2.

From 2487-07 Specks - White/Blue

*Cut seven 4-1/2" x WOF strips. Sub-cut sixty 4-1/2" B squares.
*Cut five 6-1/2" x WOF strips. Sub-cut sixty 3-1/2" x 6-1/2" E rectangles.

From 3955 Eclipse - White:

*Cut six 2" x WOF strips. Sub-cut seven 2" x 12-1/2" sashing strips and sixty 2" G squares.
*Cut three 3-1/2" x WOF strips. Sub-cut sixty 2" x 3-1/2" H strips.

ANTHEM - Quilt 1

*Cut five 5-3/4" x WOF strips. Sub-cut thirty 5-3/4"

A squares.

*Cut two 12-1/2" x WOF strips. Sub-cut forty-two 2" x 12-1/2" sashing strips (for a total of 49).

*Cut eight 2" x WOF strips for border 1.

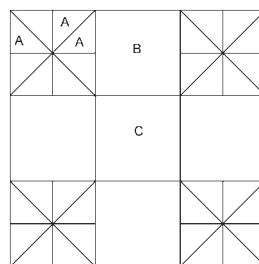
Assemble Blocks

Notes:

- Measurements include 1/4" seam allowances. Sew with right sides together unless otherwise stated. If no direction is specified, press the seam toward the darker fabric.
- The number of blocks varies by the color combination (refer to the quilt photo), so note the difference in unit numbers constructed. The block colorways are listed on Table 1 below. **Group fabrics by block for ease of construction.**

Block	Main and Accent Colors	# of Blocks
1	Main: 2487-07 Specks – White/Blue Accents: 2488-77 Fans - Dk. Blue 2488-88 Fans – Red 2480-77 Tiles - Dk. Blue	15
2	Main: 2487-07 Specks – White/Blue/3955 Eclipse – White Accents: 2486-08 Dots - White/Red 2485-88 Stars – Red 2483-77 Spaced Floral - Dk. Blue	6
3	Main: 2487-07 Specks – White/Blue/3955 Eclipse – White Accents: 2486-07 Dots - White/Blue 2485-77 Stars - Dk. Blue 2484-88 Floral Petals – Red	5
4	Main: 2487-07 Specks – White/Blue/3955 Eclipse – White Accents: 2486-08 Dots - White/Red 2483-88 Spaced Floral – Red 2481-76 Mini Floral - Med. Blue	4

Table 1. Block colorways.



Block 1 Diagram

1. Mark two diagonal lines on the wrong side of the 3955 Eclipse – White **A** squares (a). Layer a marked **A** square atop a 2488-88 Fans – Red **A** square. Stitch 1/4" on each side of the marked lines (b), cut vertically and horizontally to make four equal squares (c), then cut each square on the drawn lines to make eight half-square triangles (d). Press open and trim dog ears (*figure 1, next page*). Repeat with the remaining White, Red, and the 2480-77 Tiles - Dk. Blue **A** squares to make 120 2-1/2" half-square triangles (HST) of each color.

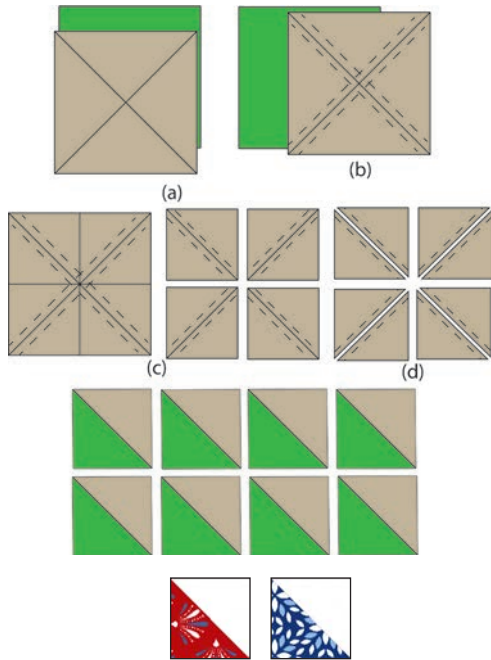


Figure 1 – Make 120 of each.

2. Sew together one Step 1 HST of each color into strips, press the seams in one direction, then sew the strips together to make sixty 4-1/2" pinwheel units (*figure 2*). Press the seams open.

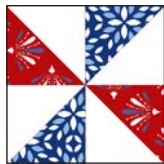


Figure 2 – Make 60.

3. Noting fabric orientation, sew a Step 2 unit to opposite sides of a 2487-07 Specks - White/Blue **B** square (*figure 3*). Press the seams toward the center. Make thirty rows.



Figure 3 – Make 30.

4. Sew a Specks - White/Blue **B** square to opposite sides of a **C** square to make the center row. Press the seams away from the center. Sew a Step 3 row to the top and one to the bottom (*figure 4*). Press the seams in one direction. Make fifteen 12-1/2" blocks.

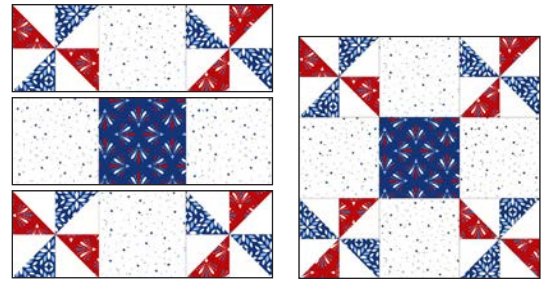
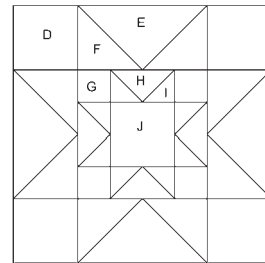


Figure 4 – Make 15.



Blocks 2-4 Diagram - Block 2 depicted below.

5. Draw a diagonal line on the wrong side of an **F** square. With right sides together, layer a marked **F** square on the left short end of an **E** rectangle and stitch on the drawn line. Trim 1/4" away from the seam line and press open. Stitch another **F** square to the opposite end of the same rectangle (*figure 5*). Make sixty assorted 3-1/2" x 6-1/2" **E/F** flying-geese units.



Figure 5 – Make 60 assorted.

6. Repeat Step 5 with the **I** squares and the **H** rectangles (*figure 6*). Make sixty assorted 2" x 3-1/2" **H/I** flying-geese units.



Figure 6 – Make 60 assorted.

7. Sew one Step 6 **H/I** unit to opposite sides of a **J** square to make the center row of the small star. Press the seams toward the center. Make fifteen assorted center rows. Sew a **G** square to opposite sides of the remaining **H/I** units to make thirty top/bottom rows. Press the seams away from the center. Sew a row to the top and one to the bottom of the center rows to make fifteen assorted 6-1/2" small stars (*figure 7*). Press the seams in one direction.

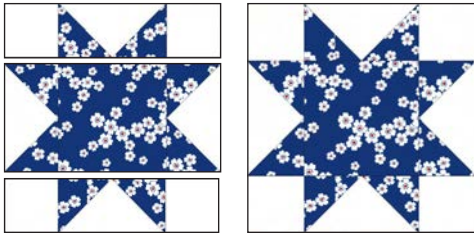


Figure 7 – Make 15 assorted.

8. Sew a Step 5 E/F unit to opposite sides of the Step 7 stars (figure 8). Press the seams toward the center.

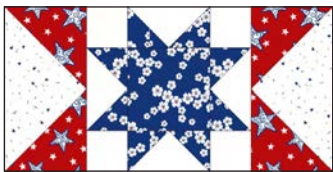


Figure 8

9. Sew a D square to opposite sides of the remaining Step 5 E/F units to make thirty top/bottom rows. Press the seams away from the center. Sew one row to the top and one to the bottom of the Step 8 units to make fifteen assorted 12-1/2” blocks (figure 9). Press the seams in one direction.

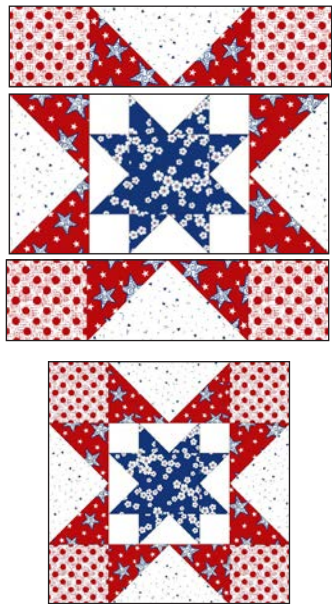


Figure 9 – Make 15 assorted.

Assemble Quilt Top

10. Referring to the quilt photo for block placement, lay out five blocks and four 2” x 12-1/2” 3955 Eclipse

– White sashing strips in six rows, and join the blocks and sashing strips together in each row. Press the seams toward the sashing.

11. To make the horizontal sashing rows, sew together five 2” x 12-1/2” White sashing strips and four 2” 2480-77 Tiles - Dk. Blue cornerstone squares. Repeat to make five sashing strips. Press the seams toward the sashing.

12. Matching adjacent seams, sew block rows and horizontal sashing strips together. Press the seams in one direction.

13. For border 1, join the eight 2” 3955 Eclipse – White strips together end to end using diagonal seams. Measure the vertical length of the quilt top through the center and cut two border strips that length. Sew one strip to each side of the quilt top and press the seams toward the border strips. Measure the width of the quilt top through the center. Cut two border strips that length and sew one to the top and one to the bottom. Press the seams toward the borders.

14. Repeat Step 13 with the nine 4-1/2” 2485-77 Stars - Dk. Blue strips to make and add border 2.

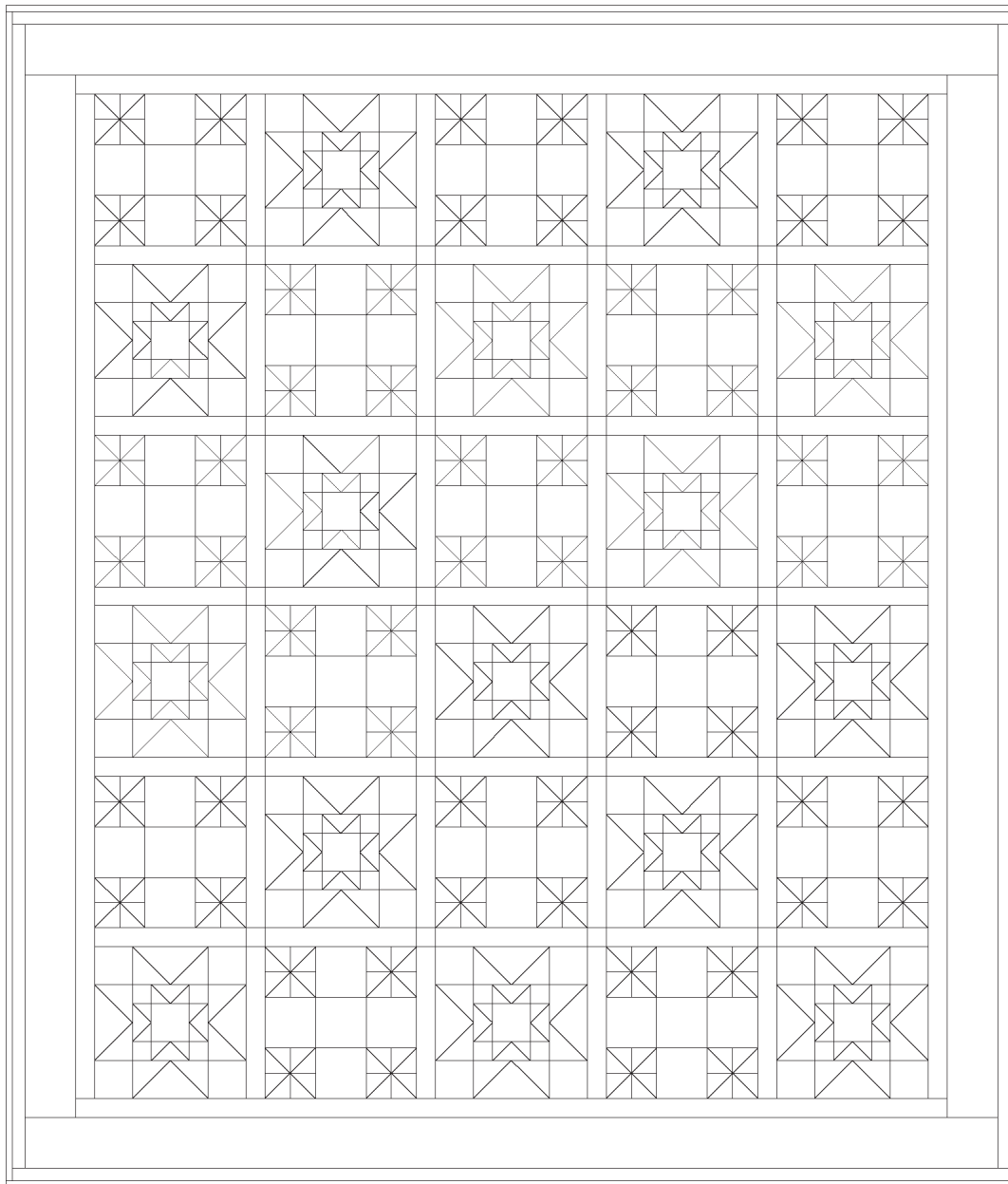
15. Repeat Step 13 with nine 1-1/2” 2480-88 Tiles – Red strips to make and add border 3.

Finishing

16. Create a sandwich with the batting between the quilt top and the backing. Pin or baste layers together, mark quilting design, and quilt by hand or machine. When quilting is complete, remove pins or basting, and trim batting and backing even with raw edges of the quilt top.

17. Join the nine 2-1/2” 3955 Eclipse – Red binding strips together end to end using a diagonal seam to make one long strip. Fold in half lengthwise and press. Sew binding to the edges of the quilt, mitering corners, and overlapping ends. Fold binding to the back of the quilt and stitch it in place by hand to finish.

ANTHEM - Quilt 1



Quilt Diagram

©2022 Blank Quilting Corporation

Every effort has been made to ensure that all projects are error free. All the information is presented in good faith; however, no warranty can be given nor results guaranteed as we have no control over the execution of instructions. Therefore, we assume no responsibility for the use of this information or damages that may occur as a result. When errors are brought to our attention, we make every effort to correct and post a revision as soon as possible. Please make sure to check www.blankquilting.net for pattern updates prior to starting the project. We also recommend that you test the project prior to cutting for kits. Finally, all free projects are intended to remain free to you and are not for resale.