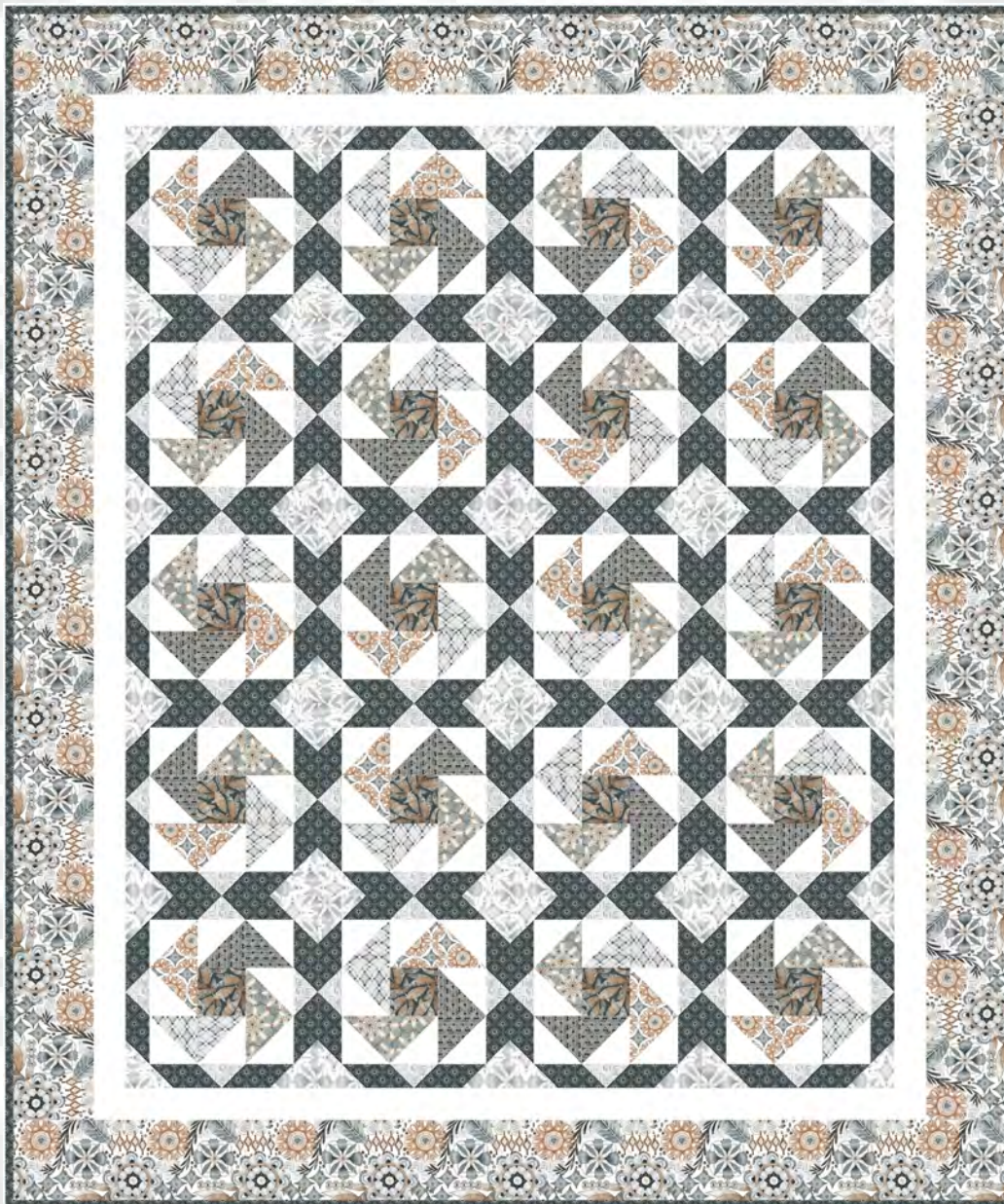




Free Project  
NOT FOR RESALE

# Zanzibar

by Danielle Hartgers



## Island Breeze Quilt

Designed by Denise Russell

Quilt size: 62" x 74"

Skill Level: Beginner

**Blank Quilting Corporation**

49 West 37th Street ♦ New York, NY 10018 - Tel: 800-294-9495 ♦ Fax: 212-679-4578

[www.blankquilting.net](http://www.blankquilting.net)

facebook

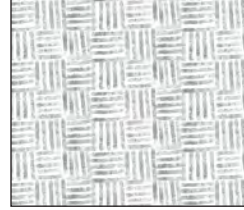
# Zanzibar - Fabrics in the Collection



3402-90 Medallion with Leaves and Feathers - Lt. Gray



3403-01 Abstract Dot White



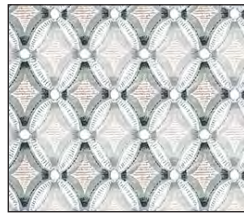
3404-90 Abstract Grid Lt. Gray



3405-95 Floral Gray



3406-39 Leaves Fawn



3407-90 Lattice Lt. Gray



3408-99 Geometric Charcoal



3409-90 Tiles Lt. Gray



3412P-90 Floral Panel 24" Lt. Gray

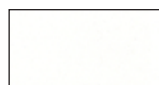


3410-99 Abstract Ovals - Charcoal



3411-39 Circle Flowers - Fawn

Selected fabric from the Eclipse Collection



3955 White

# Island Breeze Quilt

## Materials

Yardages and cutting instructions are based on 42" of usable fabric width.

¼ yard 3406-39 Leaves - Fawn  
 ⅓ yard 3405-95 Floral - Gray  
 ⅓ yard 3407-90 Lattice - Lt. Gray  
 ⅓ yard 3410-99 Abstract Ovals - Charcoal  
 ⅓ yard 3411-39 Circle Flowers - Fawn  
 ½ yard 3404-90 Abstract Grid - Lt. Gray  
 ¾ yard 3409-90 Tiles - Lt. Gray  
 1¼ yards 3402-90 Medallion with Leaves and Feathers - Lt. Gray  
 1½ yards 3955 Eclipse - White  
 1½ yards 3408-99 Geometric - Charcoal  
 4½ yards 3403-01 Abstract Dot - White for backing  
 70" x 82" piece of Air Lite® Colour Me 100% Cotton batting

## Cut Fabrics

Note: All strips are cut across the width of the fabric (WOF) from selvage to selvage unless otherwise indicated.

### From 3406-39 Leaves - Fawn, cut:

\*(2) 3½" x WOF strips. Sub-cut (20) 3½" squares.

### From each, cut:

**3405-95 Floral - Gray**

**3407-90 Lattice - Lt. Gray**

**3410-99 Abstract Ovals - Charcoal**

**3411-39 Circle Flowers - Fawn**

\*(1) 8" x WOF strip. Sub-cut (5) 8" squares.

### From 3404-90 Abstract Grid - Lt. Gray, cut:

\*(8) 2" x WOF strips. Sub-cut (160) 2" squares.

### From 3409-90 Tiles - Lt. Gray, cut:

\*(12) 2" x WOF strips. Sub-cut (240) 2" squares.

### From 3402-90 Medallion with Leaves and Feathers - Lt. Gray, cut:

\*(7) 5½" x WOF strips for border 2.

### From 3955 Eclipse - White, cut:

\*(4) 8" x WOF strips. Sub-cut (20) 8" squares.

\*(6) 2½" x WOF strips for border 1.

### From 3408-99 Geometric - Charcoal, cut:

\*(8) 5" x WOF strips. Sub-cut (160) 2" x 5" rectangles.

\*(7) 2½" x WOF strips for binding.

## Assemble Blocks

Note: Measurements include ¼" seam allowances. Sew with right sides together unless otherwise stated. If no direction is specified, press the seam toward the darker fabric.

1. Mark two diagonal lines on the wrong side of the 8" 3955 Eclipse - White squares (a). Layer a marked White square atop an 8" 3405-95 Floral - Gray square. Stitch ¼" on each side of the marked lines (b), cut vertically and horizontally to make four equal squares (c), then cut each square on the drawn lines to make eight half-square triangles (d). Press open and trim the dog ears. Make a total of (40) 3½" half-square triangles (HST).

- Repeat with the remaining White squares and the 8" 3407-90 Lattice - Lt. Gray, 3410-99 Abstract Ovals - Charcoal, and 3411-39 Circle Flowers - Fawn squares to make 40 HST of each type, for a total of 160 units (figure 1).

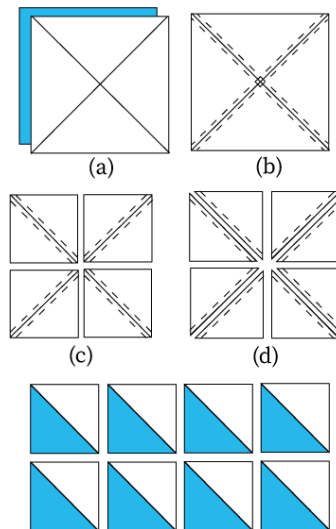


Figure 1 - Make (40) of each type.

2. Noting fabric orientation, arrange the Step 1 HST and the 3½" 3406-39 Leaves - Fawn squares in 3 rows of 3 as shown. Sew them together and press the seams in opposite directions. Sew the rows together and press the seams in one direction (figure 2, next page). Make (20) 9½" block centers.

# Island Breeze Quilt

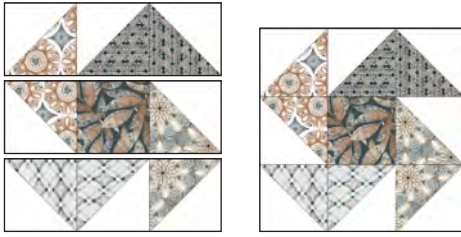


Figure 2 – Make (20) 9½" units.

- Draw a diagonal line from corner to corner on the wrong side of the 2" 3409-90 Tiles - Lt. Gray and 3404-90 Abstract Grid - Lt. Gray squares. With right sides together and noting the sewing direction, place one marked Tiles – Lt. Gray square on the left corner of one 2" x 5" 3408-99 Geometric - Charcoal rectangle and stitch on the drawn line. Similarly, sew a Grid – Lt. Gray square to the right corner of the same rectangle. Trim the seam allowances to ¼" and press open. Make (80) 2" x 5" units.

- Repeat this step, except sew the Abstract Grid – Lt. Gray squares to the left corner of the rectangle and the Tiles – Lt. Gray squares to the right corner. Do notice the sewing line orientation. Make (80) 2" x 5" units. Sew one unit of each type together to make (80) 2" x 9½" strips (*figure 3*).



Figure 3 – Make (80) 2" x 9½" units.

- Sew a Step 3 strip to opposite sides of the Step 2 block centers. Press the seams away from the center. Sew a 2" 3409-90 Tiles - Lt. Gray square to opposite ends of the remaining Step 3 strips and press the seams toward the center. Sew one strip to the top and one to the bottom of the block centers to make (12) 12½" blocks (*figure 4*). Press the seams in one direction.

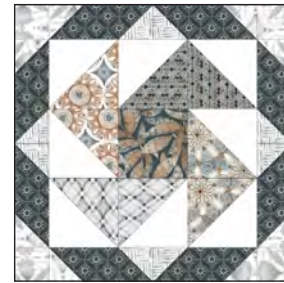


Figure 4 – Make (12) 12½" blocks.

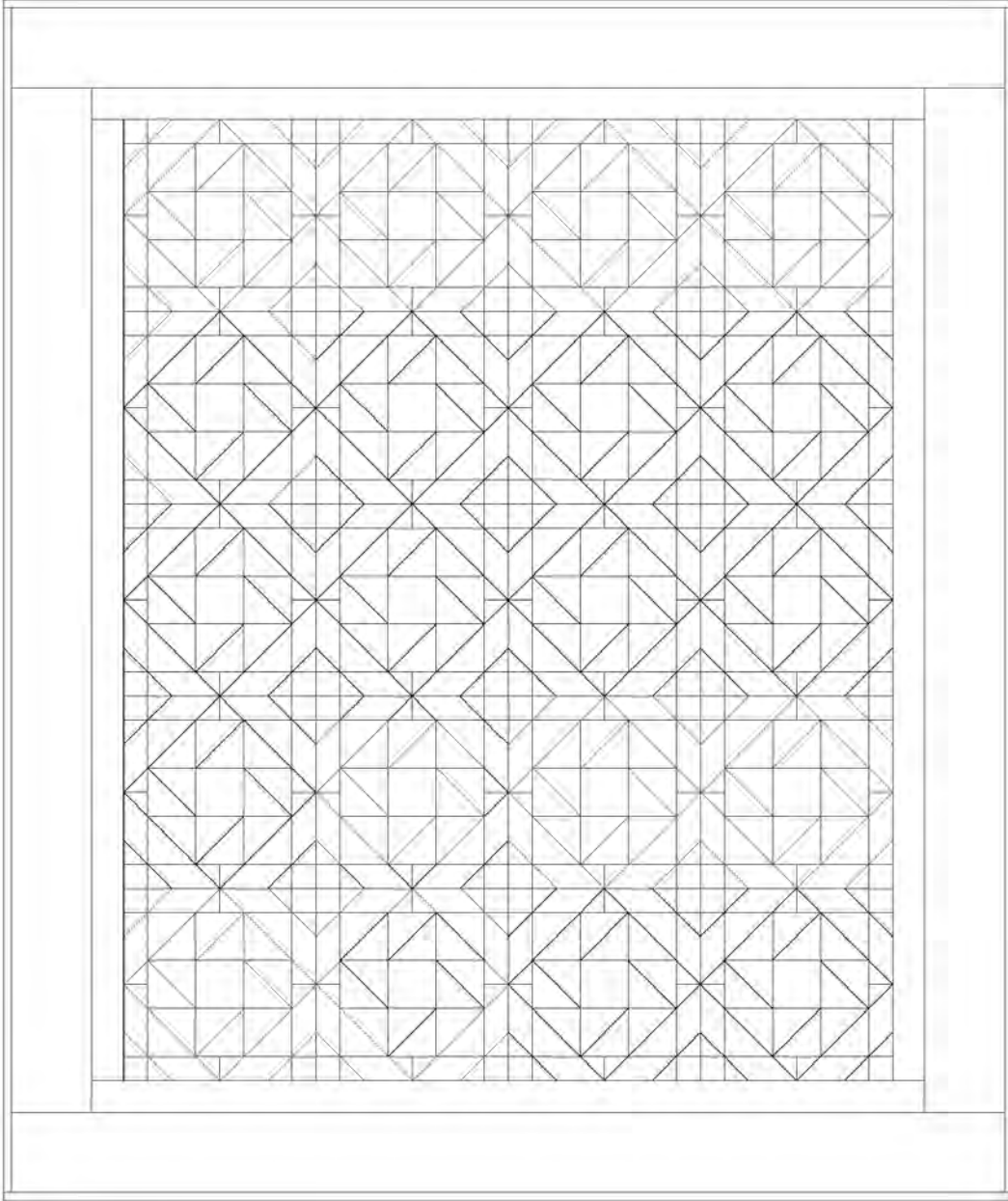
## Assemble Quilt Top

- Referring to the quilt photo for block orientation, lay out 4 blocks in 5 rows and join the blocks together in the rows. Press the seams in the opposite direction in each row.
- For border 1, join the (6) 2½" 3955 Eclipse – White strips together end to end using diagonal seams. Measure the vertical length of the quilt top through the center and cut two border strips that length. Sew one strip to each side of the quilt top and press the seams toward the border strips. Measure the width of the quilt top through the center. Cut two border strips that length and sew one to the top and one to the bottom. Press the seams toward the borders.
- Repeat Step 6 with the (7) 5½" 3402-90 Medallion with Leaves and Feathers - Lt. Gray strips to make and add border 2.

## Finishing

- Create a sandwich with the batting between the quilt top and the backing. Pin or baste layers together, mark the quilting design, and quilt by hand or machine. When quilting is complete, remove pins or basting, and trim batting and backing even with the raw edges of the quilt top.
- Join the (7) 2½" 3408-99 Geometric - Charcoal strips together end to end using a diagonal seam to make one long strip. Fold in half lengthwise with wrong sides together, and press. Sew binding to the edges of the quilt, mitering corners, and overlapping ends. Fold the binding to the back of the quilt and stitch it in place by hand to finish.

# Island Breeze Quilt



©2023 Blank Quilting Corporation

*Every effort has been made to ensure that all projects are error free. All the information is presented in good faith; however, no warranty can be given nor results guaranteed as we have no control over the execution of instructions. Therefore, we assume no responsibility for the use of this information or damages that may occur as a result. When errors are brought to our attention, we make every effort to correct and post a revision as soon as possible. Please make sure to check [www.blankquilting.net](http://www.blankquilting.net) for pattern updates prior to starting the project. We also recommend that you test the project prior to cutting for kits. Finally, all free projects are intended to remain free to you and are not for resale.*