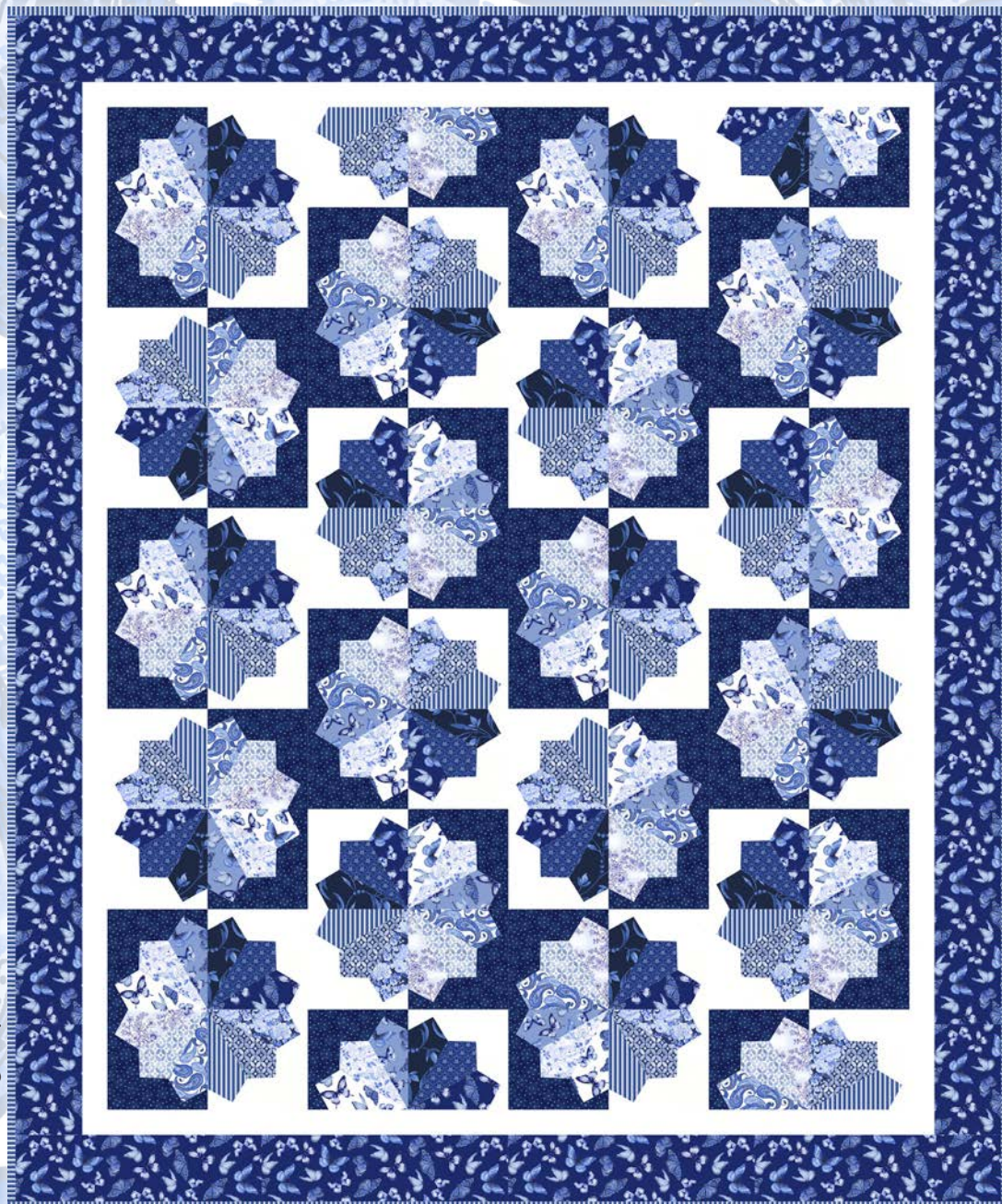




Quilt 2

Blue Jubilee



Quilt design by Denise Russell.

Quilt size: 60" x 72"

Skill Level: Confident Beginner.

Blank Quilting Corporation
49 West 37th Street ♦ New York, NY 10018
Tel: 800-294-9495 ♦ Fax: 212-679-4578
www.blankquilting.net

facebook

Free Project
NOT FOR RESALE

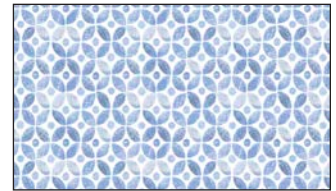
Blue Jubilee - Fabrics in the Collection



1720-75 Blocks with Teacups and Flowers
Med. Blue



1719-75 Large Daisy with Swirl
Med. Blue



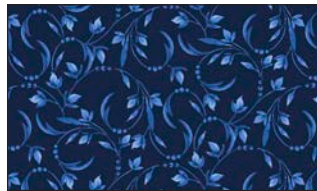
1721-70 Geometric
Lt. Blue



1721-75 Geometric
Med. Blue



1722-01 Swirl
White



1722-77 Swirl
Dk. Blue



1723-70 Floral Toile
Lt. Blue



1724-77 Floral on Striped
Background - Dk. Blue



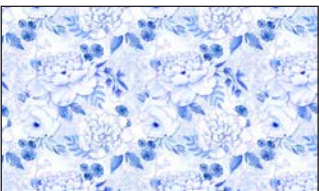
1725-01 Butterflies
White



1725-75 Butterflies
Med. Blue



1725-77 Butterflies
Dk. Blue



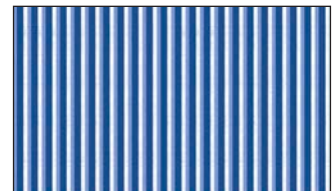
1726-70 Cabbage Rose
Lt. Blue



1726-75 Cabbage Rose
Med. Blue



1727-77 Mini Floral
Dk. Blue



1728-75 Stripe
Med. Blue



1729-01 Tossed Teacups
with Flowers - White

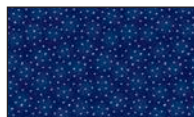


1730-75 Paisley
Med. Blue



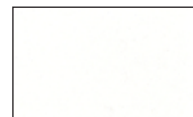
1731-75 Roses
Med. Blue

Selected fabric from the Starlet collection



6383 Navy

Selected fabric from the Eclipse collection



3955 White

Materials

Yardages and cutting instructions are based on 42" of usable fabric width.

1/2 yard *each*:

1721-70 Geometric - Lt. Blue

1721-75 Geometric - Med. Blue

1722-77 Swirl - Dk. Blue

1723-70 Floral Toile - Lt. Blue

1725-01 Butterflies - White

1725-75 Butterflies - Med. Blue

1726-70 Cabbage Rose - Lt. Blue

1726-75 Cabbage Rose - Med. Blue

1727-77 Mini Floral - Dk. Blue

1730-75 Paisley - Med. Blue

1 yard 1728-75 Stripe - Med. Blue

1-1/4 yards 1725-77 Butterflies - Dk. Blue

1-3/8 yards 6383 Starlet - Navy

1-3/4 yards 3955 Eclipse - White

4 yards 1722-01 Swirl - White for backing

68" x 80" piece of Air Lite® Colour Me 100% Cotton batting

Plastic for template

Fusible Web

Cut Fabrics

Note: *All strips are cut across the width of the fabric (WOF) from selvage to selvage unless otherwise indicated.*

From each, cut:

1721-70 Geometric - Lt. Blue

1721-75 Geometric - Med. Blue

1722-77 Swirl - Dk. Blue

1723-70 Floral Toile - Lt. Blue

1725-01 Butterflies - White

1725-75 Butterflies - Med. Blue

1726-70 Cabbage Rose - Lt. Blue

1726-75 Cabbage Rose - Med. Blue

1727-77 Mini Floral - Dk. Blue

1730-75 Paisley - Med. Blue

*Twenty blades with template.

From 1728-75 Stripe - Med. Blue, cut:

*Seven 2-1/2" x WOF strips for binding.

*Twenty blades with template.

From 1725-77 Butterflies - Dk. Blue, cut:

*Six 4-1/2" x WOF strips for border 2.

*Twenty blades with template.

From 6383 Starlet - Navy, cut:

*Seven 6-1/2" x WOF strips. Sub-cut forty 6-1/2" squares.

From 3955 Eclipse - White, cut:

*Seven 6-1/2" x WOF strips. Sub-cut forty 6-1/2" squares.

*Six 2" x WOF strips for border 1.

Assemble Blocks

Measurements include 1/4" seam allowances. Sew with right sides together unless otherwise stated. If no direction is specified, press the seam toward the darker fabric.

1. Trace the blade shape on the plastic to make templates. Cut on the outline. Trace the blade 240 times on the smooth side of the fusible web. Cut shapes 1/8" outside the outline and separate them into four groups of twenty each. Fuse one group to each of the fabrics listed below. Cut on the outline and remove the backing paper.

1721-70 Geometric - Lt. Blue

1721-75 Geometric - Med. Blue

1722-77 Swirl - Dk. Blue

1723-70 Floral Toile - Lt. Blue

1725-01 Butterflies - White

1725-75 Butterflies - Med. Blue

1726-70 Cabbage Rose - Lt. Blue

1726-75 Cabbage Rose - Med. Blue

1727-77 Mini Floral - Dk. Blue

1730-75 Paisley - Med. Blue

1728-75 Stripe - Med. Blue

1725-77 Butterflies - Dk. Blue

2. Sew one 6-1/2" 6383 Starlet - Navy square to one 6-1/2" 3955 Eclipse - White square. Repeat to make forty strips. Set aside four strips. Sew the remaining strips two by two to make 4-patches with a dark and a light side. Press the seams open. Make a total

of eighteen 12-1/2" background blocks and four half blocks, 6-1/2" x 12-1/2" (*figure 1*).



Make (18) 12-1/2" and
(4) 6-1/2" x 12-1/2" blocks.

Figure 1

3. Referring to the diagrams below for fabric location, position the blades on the Step 2 background blocks, edge to edge. Ensure the points are close to one another at the center seam of the background block. Once satisfied with the blades' position, fuse them to the block one quadrant at a time, according to the manufacturer's instructions (*figure 2*). Machine appliqué using matching thread and the blanket stitch.



Make (18).



Make (2) of each.

Figure 2

Assemble Quilt Top

4. Referring to the quilt photo for block placement and orientation, lay out the blocks in four columns such that the second and fourth columns begin and end with half blocks. Join the blocks together in each column. Press the seams in one direction.

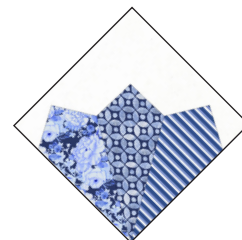
5. For border 1, join the six 2" 3955 Eclipse - White border strips together end to end using diagonal seams. Measure the vertical length of the quilt top through the center and cut two border strips that length. Sew one strip to each side of the quilt top. Measure the width of the quilt top through the center. Cut two border strips that length and sew one to the top and one to the bottom. Press the seams toward the borders.

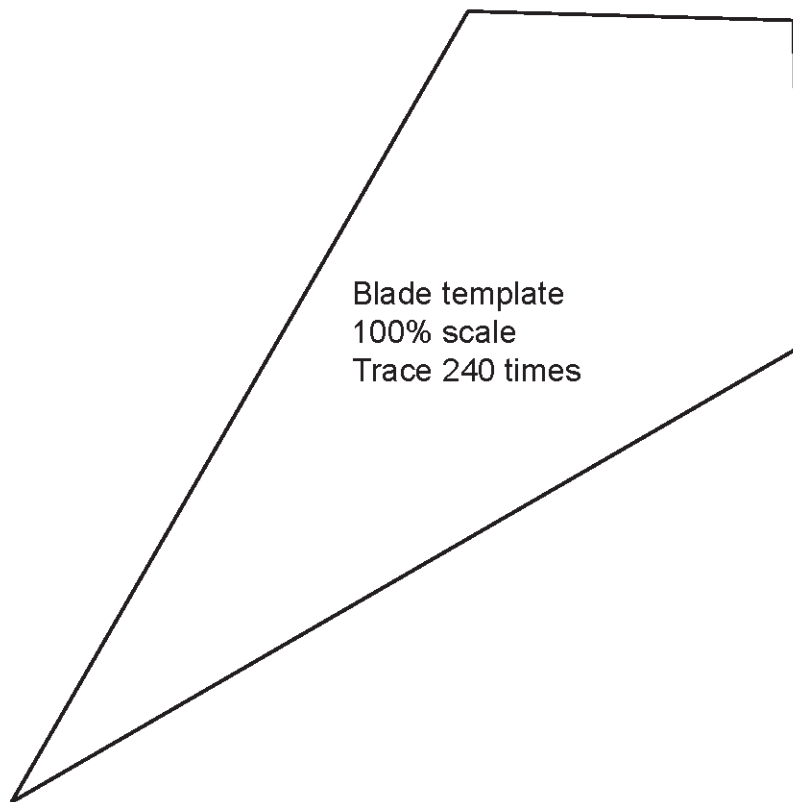
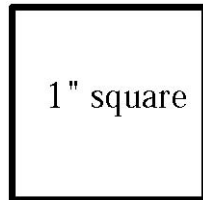
6. Repeat Step 5 with the six 4-1/2" 1725-77 Butterflies - Dk. Blue to make and add border 2.

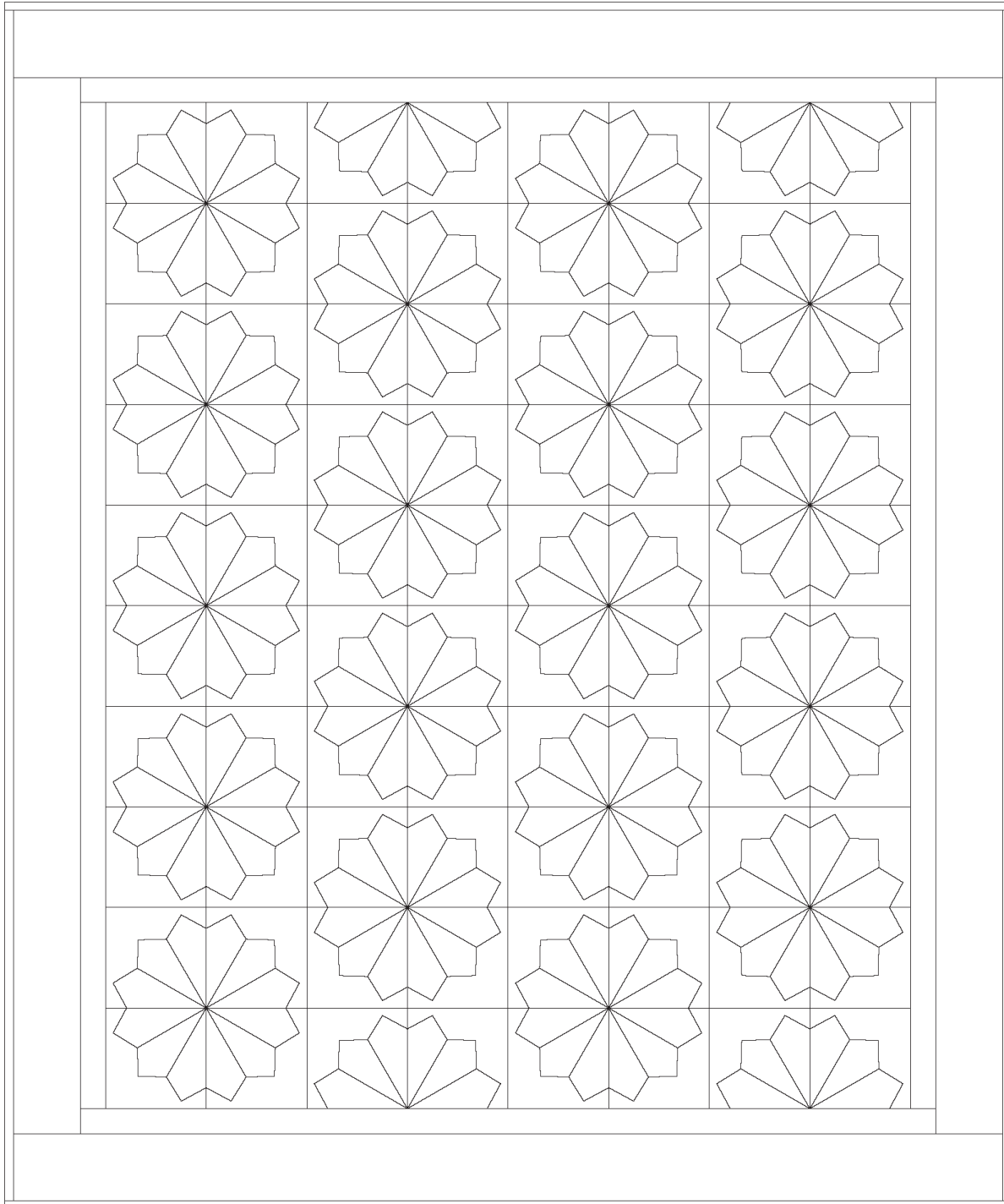
Finishing

7. Create a quilt sandwich with the batting between the quilt top and the backing. Pin or baste layers together, mark quilting design, and quilt by hand or machine. When quilting is complete, remove pins or basting, and trim batting and backing even with raw edges of the quilt top.

8. Join the seven 2-1/2" 1728-75 Stripe - Med. Blue binding strips together end to end using a diagonal seam to make one long strip. Fold in half lengthwise and press. Sew binding to the edges of the quilt, mitering corners, and overlapping ends. Fold binding to the back of the quilt and stitch it in place by hand to finish.







©2021 Blank Quilting Corporation

Every effort has been made to ensure that all projects are error free. All the information is presented in good faith; however, no warranty can be given nor results guaranteed as we have no control over the execution of instructions. Therefore, we assume no responsibility for the use of this information or damages that may occur as a result. When errors are brought to our attention, we make every effort to correct and post a revision as soon as possible. Please make sure to check www.blankquilting.net for pattern updates prior to starting the project. We also recommend that you test the project prior to cutting for kits. Finally, all free projects are intended to remain free to you and are not for resale.